

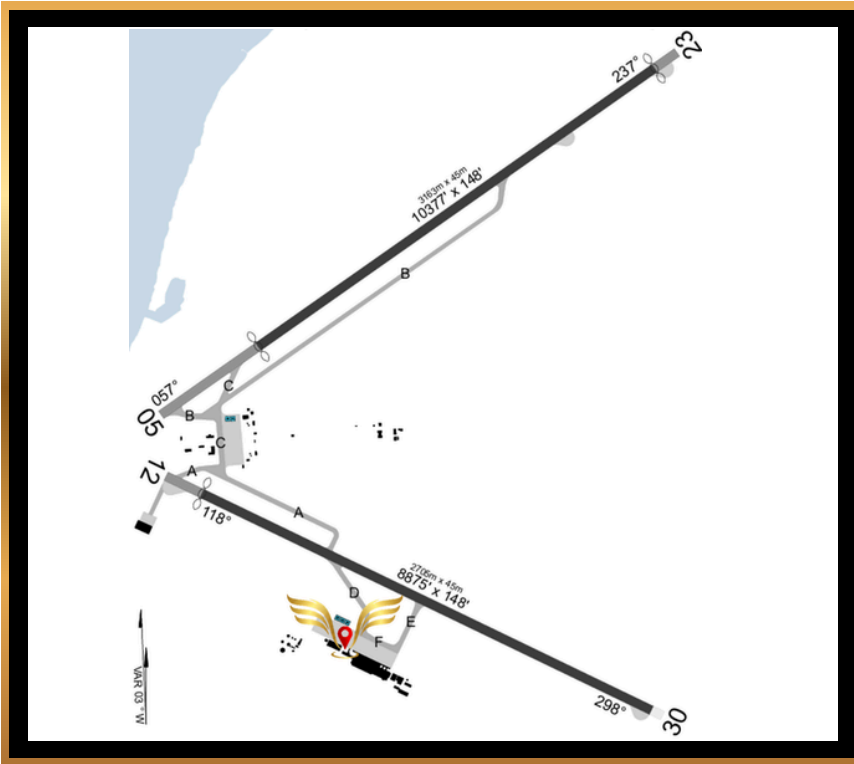


LIN AVIATION SERVICES
NEW SOLUTIONS FOR A NEW AVIATION

MM CZ / CZM

COZUMEL

AEROPUERTO INTERNACIONAL DE COZUMEL



ADDRESS:

Carretera Aeropuerto Internacional de Cozumel
Cozumel, Quintana Roo. C.P. 77600

TELEPHONE:

+52 442 476 5348
+52 442 609 5000
+52 331 431 3668

OPERATIONAL HOURS

07:00 / 21:00 L

CUSTOMS AND IMMIGRATIONS

07:00 / 21:00 L

FUEL AVAILABLE:

AVGAS 100LL/130LL
JET-A

FUEL PAYMENT METHOD:

Debit Card
Credit Card
ASA Fuel Release

FIRE CAT: VII	TYPE OF SURFACE: ASPHALT	PCN: 040FBXT	ELEVATION (FT): 14.76	CAR RENTAL: YES
-------------------------	------------------------------------	------------------------	---------------------------------	---------------------------

EXECUTIVE TRANSPORTATION: YES	GROUND AMBULANCE: YES	CATERING YES
---	---------------------------------	------------------------

ARRIVALS:

1. Expect ground control instructions for taxiing to GENERAL AVIATION
2. Crew and passengers' passports will be requested by one of our staff representatives to present them to Immigration authorities. Once released they will be handed back.
3. When passengers get off the aircraft, Customs, federal agents, and health-sanitation authorities will board to perform an inspection.
4. Passengers must walk into the General Aviation building to follow the CIQ processes. Please consider all luggage must be unloaded and cannot be inspected without owner's presence (Authorities usually take trained dogs to detect food or any other substances).
5. This process takes around 15 to 20 minutes depending on the number of operations happening simultaneously at the airport.

DEPARTURES:

1. Once in the General Aviation Building, crew and passengers' passports will be requested by one of our staff representatives to present them to Immigration authorities to be stamped and authorized for departure.
2. Once Immigration process is over, our staff representatives will take all luggage to Customs for inspection. When ready, all passengers will be able to walk through the metal detector and board the aircraft.
3. The aircraft will be at the departure spot already, no need to tow it anymore.
4. This process will take from 15 to 20 Minutes